

## Interiors, Art & Antiques, 5th Dec, 2024 09:30

- 1 † Rebecca Lardner (b.1971), 'Busy Bay', signed 'Rebecca Lardner' (lower right), oil on canvas, 50 x 50 cm, unframed  
Crossing Gate Gallery, Bordon **£300-500**



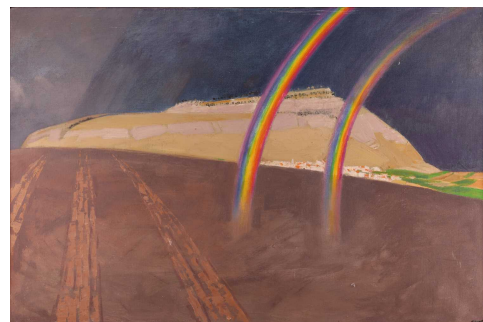
- 2 After Sir Henry Raeburn (19th century), Half-length portrait of a seated lady in a white dress, oil on panel, 44 x 33 cm (oval),  
framed 55 x 47.5 cm **£200-300**



- 3 Louise Ellen Perman (Scottish 1854-1921), Roses on a stone shelf, signed 'L.E.Perman' (lower right), oil on canvas, 62 x 51  
cm, framed and glazed 91 x 81 cm **£800-1,200**



- 4 † Jack Wright (1919 - 1994), Rainbows, initials 'J.W.' and dated '76 (lower right), oil on canvas, 61 x 91 cm, framed 63 x  
93 cm **£600-800**



- 5 † Roy Petley (b.1951), Landscape with windmills, signed 'Roy Petley' (lower left), oil on board, 61 x 91 cm, framed 87 x 117  
cm  
Petley Fine Art **£400-600**



## Interiors, Art & Antiques, 5th Dec, 2024 09:30

- 6 † Stuart Armfield Maxwell (1916-2000), Stealing Time, signed 'Stuart Armfield' (lower right), tempera on board, 91 x 56 cm, framed 105.5 x 70 cm **£500-700**



- 7 † Rebecca Lardner (b.1971), Tranquil Morning Blue (2001), signed 'Rebecca Lardner' and dated (lower right and verso), mixed media on board, 19 x 60 cm, framed and glazed 38 x 79 cm  
Crossing Gate Gallery, Bordon **£400-600**



- 8 † Rod Judkins (b.1956) British, untitled, oil on canvas, 119 cm x 82 cm , unframed. **£300-400**



- 9 † Aldo Affortunati (Italian, 1906-1991), The Circus, signed 'Affortunati Aldo' (lower right), oil on canvas, 40.5 x 60 cm, framed 54 x 74.5 cm **£200-300**



- 10 † Aldo Affortunati (Italian, 1906-1991), Ballerinas, signed 'Affortunati Aldo' (lower left), oil on canvas, 50 x 60 cm, framed 65.5 x 76 cm **£200-300**



## Interiors, Art & Antiques, 5th Dec, 2024 09:30

- 11 William Adolphus Knell (1801-1875), seascape, watercolour, signed to lower right corner, 24 cm x 47 cm, glazed in a gilt frame, 45 cm x 67 cm, together with Harry Hine (1845-1941), view of Lincoln Cathedral, watercolour, signed, 36 cm x 45 cm, framed and glazed, 64 cm x 73 cm. (Qty: 2) **£200-300**



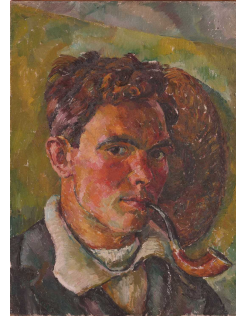
- 12 † Stuart Maxwell Armfield (1916 - 2000), Fishing Boat on Shore, signed Stuart Armfield (lower right), tempera on board, 45.5 x 91 cm, framed 60x 106 cm **£500-700**



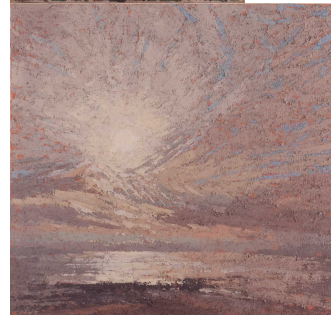
- 13 Dutch School (19th century), Skating scene, unsigned, oil on panel, 23.5 cm x 31 cm in a gilt frame, 42 cm x 49 cm. **£250-350**



- 14 † Jack Wright (1919 - 1994), Man with a Pipe, incised initials 'J.W.' (lower right), oil on canvas, 40.5 x 30.5 cm, unframed **£300-500**



- 15 † Michael Fairclough (b.1940), 'Owey Sound, Donegal - Between Tides XI', labelled verso, oil on paper, 34 x 36 cm, framed and glazed 57.5 x 58.5 cm **£200-300**



## Interiors, Art & Antiques, 5th Dec, 2024 09:30

- 16 † Aldo Affortunati (Italian, 1906-1991), Florence street scene, signed 'Affortunati Aldo' (lower left), oil on canvas, 50 x 40 cm, framed 64.5 x 55 cm; and another street scene with horse and cart, signed 'Affortunati Aldo' (lower left), oil on canvas, 49 x 60.5 cm, framed 64 x 74 cm  
(Qty: 2) **£150-250**



- 17 † Andrew Bone (Zimbabwean, b. 1957), Pair of male lions on an outcrop, signed 'Andrew Bone' (lower right), oil on canvas, 65 cm x 89 cm, framed 75.5 cm x 99 cm. **£300-500**



- 18 † Rebecca Lardner (b. 1971), Cockleshells, signed 'Rebecca Lardner' (lower right), oil on canvas, 50 x 50 cm, unframed  
Neville Contemporary Art, Kinglsey **£300-500**



- 19 Flemish School (Early 19th century), Figures in a landscape, oil on oak panel, 22 x 25 cm, framed 34 x 37.5 cm **£200-300**

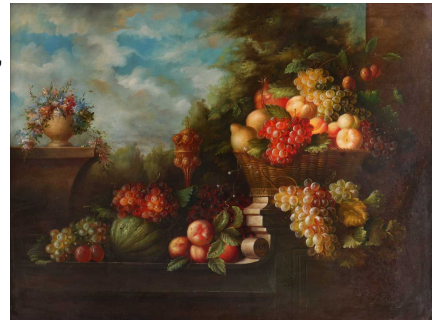


- 20 19th century Continental School, A Swiss Alpine scene with a rock-strewn roofed chalet and mountainous rear ground, oil on canvas, 64 cm x 90 cm, framed, 83 cm x 111 cm  
Formerly of Donnington Castle House, near Newbury, Berkshire **£200-300**



## Interiors, Art & Antiques, 5th Dec, 2024 09:30

- 21 † Francois Gabriel (French, 1893 - 1993), Still life of fruit, signed 'F. Gabriel' (lower right), oil on canvas, 76.5 x 101.5 cm, framed 100.5 x 125.5 cm **£400-600**



- 22 † Alfredo Serri (Italian 1897 - 1972), Still life with wine bottle, sketch and grapes, signed 'A. Serri' (lower right), oil on canvas, 40.5 x 50 cm, framed 54.5 x 65 cm; and another still life of books, signed and dated 'A. Serri 1961' (upper left), oil on canvas, 50 x 60 cm, framed 68.5 x 78.5 cm (Qty: 2) **£200-300**



- 23 † Rebecca Lardner (b.1971), 'Harbour Houses I', signed 'Rebecca Lardner' (lower right and verso), oil on paper, 16 x 55.5 cm, framed and glazed 31.5 x 71.5 cm Crossing Gate Gallery, Bordon **£300-500**



- 24 Manner of Samuel Raven (1775-1847), Scene of a Sportsman with his gun dogs, oil on canvas, 41 cm x 56 cm in a gilt frame, 62 cm x 73 cm Deceased London estate **£300-500**

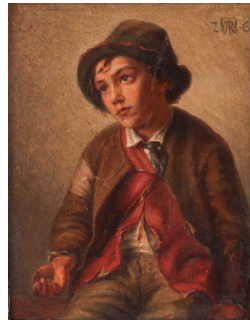


- 25 E.J. Watt (British, 19th century), Navy ships and other vessels anchored on coastlines - a pair, each signed E.J. Watt (lower left - one indistinctly) oils on canvas, 56 x 92 cm, framed 69 x 106 cm. (Qty: 2) Private Collection **£600-800**



## Interiors, Art & Antiques, 5th Dec, 2024 09:30

- 26 Continental School (early 20th century), Seated Begging Boy, monogrammed J.R.M and dated 26 (upper right), oil on panel, 16 x 13 cm, framed 39 x 36 cm **£200-300**



- 27 English School (early 19th century), Scene of a valley with sheep and peasants in the foreground, a rainbow visible in the landscape, oil on canvas, 31 cm x 42 cm (re-lined), the gilt frame 41.5 cm x 52 cm. **£300-500**



- 28 † Rebecca Lardner (b.1971), Seagull Wharf, signed 'Rebecca Lardner' (lower left), oil on canvas, 20 x 50 cm, unframed Neville Contemporary Art, Kingsley **£400-600**



- 29 John Willes Johnson (1793-1857), Harbour scene, signed and dated 1830, oil on canvas, 31 cm x 39 cm, and another by the same hand, signed and dated 1829, each in a gilt frame, 39.5 cm x 47.5 cm.  
(Qty: 2) **£400-600**



- 30 Hercules Brabazon Brabazon (1821-1906), Venice, initialled watercolour, 17 cm x 24 cm, and 'Rouva, Spain', watercolour, 12 cm x 17 cm, each framed and glazed, largest frame 33 cm x 41 cm.  
(Qty: 2)  
Exhibition labels verso, J Leger & Son, London **£400-600**



## Interiors, Art & Antiques, 5th Dec, 2024 09:30

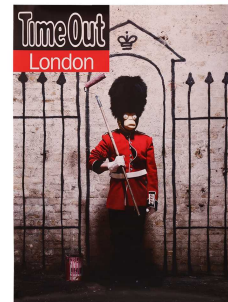
- 31 Paul Marney (1829-1914) French, a pair of Continental townscapes, signed 'Paul Marney' (lower left) and 'P. Marney' (lower left), watercolours, each 15 cm x 44 cm, framed and glazed, the frames 33.5 cm x 62 cm. **£200-300**



- 32 † Melaine Manchot (b.1961), 'Double Portrait, Mum & I' (1996), From the 'Look At You Loving Me' series, signed and dated (verso), silver gelatin and mixed media on canvas, 148 x 112 cm, framed 150.5 x 113.5 cm **£200-300**



- 33 † Banksy, (b.1974) British, 'Self-Portrait' (Time Out London) poster, 2010, offset lithographic poster in colours, from the edition of 5000, printed and distributed by Time Out London, 68 cm x 51 cm, (rolled) **£200-300**



- 34 † Jean Gibson (1927-1991) British, 'Breakthrough', abstract mixed media, three dimensional, signed 'Gibson' verso, 87 cm x 93 cm **£200-300**



- 35 † Tim Braden (b.1975), 'Jozo' (2005), signed 'Tim Braden' and dated verso, watercolour on canvas, cardboard model with metal and timber table, 180 x 118 cm, unframed, model 55 x 53 x 18 cm, table 100 x 80 x 36 cm (Qty: 3)  
Timothy Taylor Gallery (ref: T004200) **£1,000-1,500**



## Interiors, Art & Antiques, 5th Dec, 2024 09:30

- 36 † Joan Gillchrest (British 1918-2008), *On Holiday*, monogrammed (lower right), oil on card, 17 x 12 cm, framed and glazed 44 x 37.5 cm

**Provenance**

With Wren Gallery, Burford, Oxon.  
Private collection, UK. **£600-800**



- 37 † Melaine Manchot (b. 1961), *'Aeroflot, 12.36pm,'* (2004), From the *'Groups + Locations (Moscow)'* series, C-print, image 75 x 112 cm, sheet 92 x 128.5 cm, framed 94 x 131 cm **£200-300**



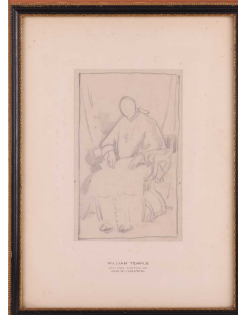
- 38 † Attributed to Mario De Grossi (1925 - 1999), *'A II'* (Abstract), bears signature and dated verso, oil on canvas covered in nylon, 111 x 111.5 cm, framed 113.5 x 114 cm **£200-300**



- 39 † Attributed to Mario De Grossi (1925 - 1999), *'N1'* (Abstract), bears signature and dated 1973 verso, oil on canvas covered in nylon, 124 x 111 cm, framed 127 x 113 cm **£300-400**



- 40 Attributed to Sir William Orpen (1878 - 1931), study for a portrait of William Temple, unsigned, pencil, 23.5 x 15 cm, framed 44.5 x 33.5 cm, the reverse with an image of a similar portrait painting of a Catholic Bishop. **£300-500**





## Interiors, Art & Antiques, 5th Dec, 2024 09:30

- 41 Fabian Perez (Argentinian b.1967), Geisha with White Flowers I, numbered 31/95, embellished canvas on board, 38 x 30.5 cm, framed 60 x 52 cm  
DeMontfort Fine Art certificate of authenticity **£300-500**



- 42 † Bryan Organ (b.1935) British, Study of Venice, mixed media on paper, signed lower right and dated August 1968, 43 cm x 50 cm, framed and glazed, 60 cm x 66 cm.  
Deceased estate, Hampstead **£200-300**



- 43 Nana Shiomi (Japanese, b. 1956), 'Sanctuary - Gosho', signed and inscribed in pencil in Japanese and English, 4/30, coloured woodblock, image 57 x 91 cm, framed and glazed 82.5 x 116 cm; and 'The Moon-Watching Platform - Night' signed and inscribed in pencil in Japanese and English, 10/30, coloured woodblock, image 60 x 81 cm, framed and glazed 86 x 107 cm  
(Qty: 2) **£300-500**



- 44 Heidi Koenig (German b.1964), 'Volubilis', signed 'Heidi Koenig' (lower right), numbered 1/175, etching, 55 cm x 70 cm, framed and glazed. **£100-150**



- 45 † Albert Irvin (1922-2015), 'Concordia II', signed 'Irving' and dated '97' (lower right), numbered 83/195, screenprint with woodblock, image 35 x 52 cm, sheet 51 x 67.5 cm, framed and glazed 72 x 89

**Provenance**

Advanced Graphics London blind stamp **£250-350**



## Interiors, Art & Antiques, 5th Dec, 2024 09:30

- 46 † Albert Irvin (1922-2015), New Cross, signed 'Irvin' and dated '94' in pencil (lower right), numbered 14/225, screenprint with woodblock, image 43 x 60 cm, sheet 55 x 72 cm, framed and glazed 72.5 x 89 cm  
**Provenance**  
 Advanced Graphics London blind stamp **£300-500**



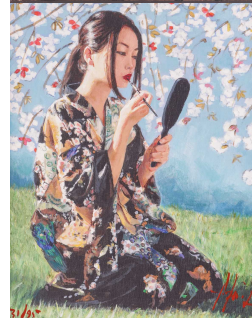
- 47 James Abbot McNeill Whistler (American, 1834 - 1903), Black Lion Wharf, signed and dated 1859 in the plate, etching on laid paper with 'DEDB' Beehive watermark, plate 15 x 22.5 cm, sheet 17.5 x 25 cm, framed and glazed 34 x 49.5 cm **£1,000-1,500**



- 48 Fabian Perez (Argentinian b. 1967), Calles de San Telmo, signed in pencil (lower right) and numbered 266/495, giclee print on paper, image 36 x 46 cm, framed 76 x 82 cm **£300-500**



- 49 Fabian Perez (Argentinian b. 1967), Geisha with White Flower II, numbered 31/95, embellished canvas on board, 38 x 30.5 cm, framed 60 x 52 cm  
 DeMontfort Fine Art Certificate of Authenticity **£300-500**



- 50 † Sir Stanley Spencer (British, 1891-1959), Composition sketch of figures with their hands raised and verso Composition sketch and character study, Stanley Spencer Studio Sale blindstamp verso (lower right), artist's notes in pen 'Under 7 with L in front - out of mind' (upper right verso), pencil and pen on paper, 24cm x 33cm, framed and glazed, 42cm x 51cm. **£800-1,200**

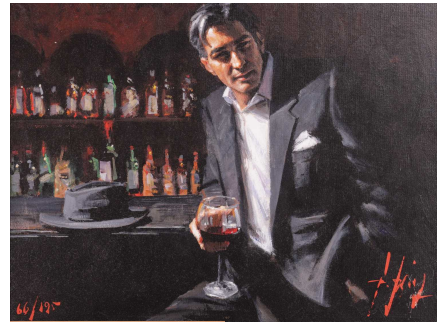


## Interiors, Art & Antiques, 5th Dec, 2024 09:30

- 51 Mortimer Menpes (Australian/British 1855 - 1938), 'Old Bridge, Mandalay, signed in pencil (lower right), drypoint etching, 20 x 29.5 cm, framed and glazed 37.5 x 46.6 cm; and Barges on the Thames, signed in pencil (lower right), drypoint etching, 20 x 30 cm, framed and glazed, 48 x 57 cm (Qty: 2) **£200-300**



- 52 Fabian Perez (Argentinian b.1967), Black Suit Red Wine, numbered 66/195, hand embellished giclee on canvas, 45.5 x 61 cm, framed 67.5 x 83 cm  
DeMontfort Fine Art certificate of authenticity **£300-500**



- 53 Pierre-Auguste Renoir (French, 1841 - 1919), 'Sur La Plage, á Berneval', signed 'Renoir' in the plate (lower right), etching, image 11.5 x 7.5 cm, plate 13.5 x 9 cm, framed 37 x 34 cm **£200-300**



- 54 A Japanese four-section inro case showing the remains of rouge lacquer, late Edo Period, inlaid with abalone shell and textured marble Japanese maple leaves and on raised gilt enamel branches. with silken cord fitted with hardwood ojime decorated with a stand of bamboo. 7.3 cm long x 5.4 cm x 2.4 cm thick the case alone. **£200-300**



- 55 A Persian Nishapur circular pottery bowl, 10th century, painted in earth pigments of a slip-covered ground, painted with a naive study of an Asiatic Lion & Lioness. 21 cm diameter. A private estate **£300-500**



## Interiors, Art & Antiques, 5th Dec, 2024 09:30

- 56 A Japanese Furisode, 20th century, embroidered in coloured silks on a metallic golden ground, worked with colourful flowers and birds, with a contrasting orange lining. **£200-300**



- 57 A Chinese "Archaic" form bronze and champleve enamel baluster vase, Qing dynasty, with dragon mask handles, a square section mouth decorated with raised lappets above a girdle of palmettes over a spreading pedestal foot. 18.5 cm high. **£300-400**



- 58 A pair of large and impressive Chinese spinach green jade equestrian carvings, 20th century, one mount with the Empress one with the Emperor up, each with rectangular plinth bases, 21 cm wide x 28 cm the larger. **£1,000-1,500**



- 59 Utagawa Kuniyoshi (1798-1861), a pair of Japanese woodblock prints, figures in interiors, each 22 cm x 34 cm, together with a further pair of 19th century woodblock prints, figures in a landscape, 35 cm x 23 cm, also framed and glazed. (Qty: 4) **£200-300**



- 60 A pair of Chinese Canton porcelain baluster vases, Qing Dynasty probably Tongzhi (unmarked), each with petaled everted rims, the exterior of the bodies with rampaging red and black four clawed dragons, on a soft blue enamel ground of stylized flowers, fitted kylin handles and salamander mounts, 20 cm approximate diameter x 35 cm overall height. A private estate **£400-600**



## Interiors, Art & Antiques, 5th Dec, 2024 09:30

- 61 A large Chinese 19th/20th-century red silk embroidered imperial portrait of the Emperor bordered with applied mirror dots and a frieze of rampaging four-clawed dragons, 234 cm x 112 cm  
A private collection **£300-400**



- 62 A large pair of Japanese Satsuma pottery double gourd vases, Meiji period, late 19th century, modelled with fierce dragons entwined around the bodies and painted with warring clans on the shoreline. below a brocaded neck and Shimazu mark, Bearing a character mark for Nishi (?) to the base. 45 cm high.  
**£200-300**



- 63 A small study collection of Chinese porcelain, including an early 18th-century blue and white saucer painted with a heaped cobalt painting of a rampaging dragon in pursuit of the flaming pearl, 16 cm diameter together with a similar saucer, a similarly decorated early 18th-century circular rice bowl, an early Republic Famille Rose circular footed dish and an 18th century blue and white soup plate.  
(Qty: 5)  
A private estate **£200-300**



- 64 A Chinese carved hardstone boulder group of Lu Dongbin surrounded by attendants mountain top strewn with pine and a distant pagoda on a rocky outcrop on a shaped hardwood stand, 30 cm wide x 15 cm height of the boulder alone, **£200-300**



- 65 Five African masks, and carvings, Ivory Coast Guro and others. **£100-150**



## Interiors, Art & Antiques, 5th Dec, 2024 09:30

- 66 Six various African Tribal carvings including a Luba Witch Doctor figure, 47 cm high, and two Ivory Coast Guro masks  
A private estate **£200-300**



- 67 Eight African masks, including songye and Guro and others.  
**£150-250**



- 68 Collection of African tribal carvings, Songye, Namibian, and Zimbabwe, and two hardstone carved sculptures, including a large soapstone abstract work signed W. Mariga (Walter Mariga). 36 cm wide x 40 cm high. **£300-500**



- 69 A pair of 19th-century and later mahogany dwarf 'Waterfall' open bookcases, each with shaped backs and moulded edges, and fitted a short frieze drawer, supported by turned feet. 46 cm wide x 32 cm deep x 76 cm overall height.  
A private Kentish collector **£300-400**



- 70 A good quality reproduction yew wood two-section campaign secretaire with folding bale handles and corner caps, the top drawer with sliding fitted interior, above three long drawers and bracket feet. 87 cm wide x 55 cm deep x 89 cm overall height.  
A private estate **£300-500**



## Interiors, Art & Antiques, 5th Dec, 2024 09:30

- 71 A George III-style mahogany serpentine fronted commode chest, early 20th century, fitted four long drawers flanked by a pair of cluster column pilasters, on shaped ogee bracket feet. 98.5cm wide x 56 cm deep x 91 cm overall height. **£300-400**



- 72 An early 18th-century oak deed box with a hinged cover and single frieze drawer below, 50 cm wide x 30 cm deep x 22 cm high. together with a 19th century cube form box stool. **£150-200**



- 73 A Queen Anne red walnut side chair with shaped cresting and vase splat over a drop-in seagrass seat, supported by cabriole legs united by turned stretchers, together with a small George II walnut swing toilette mirror, with box base, a William III style walnut side chair. (3) **£150-200**



- 74 A French 19th-century cherrywood farmhouse table with a narrow planked and clamped top of mellow colour, above a shaped frieze, accommodating one end drawer, supported by square tapering legs, 208 cm long x 79 cm deep x 78 cm overall height, 66 cm knee height. Part of the contents of a Catholic retreat, known as the Firs, sold by this room in 2023. **£500-700**



- 75 A Charles II and later oak wainscot armchair with scroll-carved cresting rail, above a pair of figural brackets depicting Charles II in a mortuary pose, flanking a central lozenge-carved panel over a planked seat and swept arms, the base with heavy baluster turned supports and cross stretchers, 62 cm wide x 53 cm deep x 117 cm overall height, 42 cm height to the seat. A private Kentish collector **£300-400**



## Interiors, Art & Antiques, 5th Dec, 2024 09:30

- 76 A pair of decorative heavy cast-handled table urns of Campagna form, with a pair of scroll handles and moulded rims above the gadrooned bodies on square plinths, 50 cm wide x 40 cm.  
A private estate **£200-300**



- 77 A part Elizabeth I oak rectangular draw leaf table, with adzed and clamped plank top and leaves above a carved frame supported by massive Elizabethan cup and cover supports united by a central stretcher. 144 cm long( 264 cm open) x 85 cm wide x 80 cm overall height.  
A private Kentish collector **£600-800**



- 78 A Regency mahogany two-flap sofa table with double book matched veneered and crossbanded top, above an inlaid frieze, each side with diagonally opposed real and faux drawers, raised on end stile supports with satinwood strung invited sabre legs terminating in lion's paw brass castors. 119 cm wide x 68 cm deep x 71 cm overall height. **£200-300**



- 79 A George III Irish, mahogany petal-edged snap top tripod table, the lobed top interspersed by "Dublin Shell" motives, over a spiral fluted urn column and well-carved cabriole legs. 72 cm diameter top 70 cm overall height **£200-300**



- 80 A pair of 16th-century style oak credence tables with crescent tops, constructed from period timber but most likely 19th century, supported by turned legs united by moulded cross stretchers, 80 cm wide x 47 cm deep x 70 cm high  
A private Kentish collector **£400-500**





## Interiors, Art & Antiques, 5th Dec, 2024 09:30

- 81 Late 17th-century oak coffer, carved with an arcaded frieze above a four-panel front, on stile supports, 154 cm wide x 65 cm deep x 82 cm overall height. **£150-250**



- 82 George III, Chippendale period mahogany card table the figured solid top opening to reveal a West Country cloth lined interior, above a flame-grained veneered frieze and beaded moulding on chamfered square supports. 83 cm wide x 42 cm deep x 72 cm overall height.  
A private estate **£200-300**



- 83 A late 18th-century Italian walnut parquetry bureau, with a quartered fall opening to reveal a stepped interior with central well above two short and one faux and a further real long drawer, on square tapering legs with stop-fluted decoration. 94 cm wide x 51 cm deep x 99 cm overall height, 73 cm knee height below the fall. **£300-500**



- 84 A George III-style demilune satinwood foldover card table, the top opening to reveal inset crimson West country cloth lining, supported by moulded square legs. 91.5 cm wide x 54 cm deep x 76 cm overall height **£200-300**



- 85 A walnut lady's kneehole desk, early 18th century and later with the top with figured field walnut, herringbone and banded parquetry above a single long frieze drawer above a central recessed kneehole cupboard with drawer below, flanked by six further short drawers above cross grain collection moulding and four shaped bracket feet. 83 cm wide x 49.5 cm deep x 81 cm overall height x 66 cm knee height.  
A private collection **£300-500**



## Interiors, Art & Antiques, 5th Dec, 2024 09:30

- 86 Set of eight Regency mahogany dining chairs, with curved cresting rail, drop in seats, on reeded front legs, including a pair of carvers. **£300-500**



- 87 An Art Deco style rectangular dining table of architectural form, the slab top with applied gold leaf top on a "a piano black frame, supported by a pair of inboard stile support, together with a set of six Art Deco style dining chairs in the manner of Ruhlmann. 201 cm wide x 105 cm x 73 cm overall height, 67 cm knee height.  
A private estate **£200-300**



- 88 A 19th-century primitive figured elm circular cricket table, probably Welsh, the thick well-figured top fitted with simple hewn stick legs with foxed through construction. 60 cm diameter x 52 cm overall height  
(Qty: 2)  
A private Kentish collector. **£200-300**



- 89 A George III Chippendale Period brass-bound mahogany octagonal cellaret with moulded edge, the hinged top opening to reveal the original lead foiled lined and partitioned fittings, and a pair of folding bale handles to the opposing sides, supported by short square section fluted legs with brass off-set castors with compressed leather wheels. 47 cm wide x 73 cm overall height. **£200-300**



- 90 A Coalbrookdale-style cast iron conservatory heater of pierced gothic form. 30 cm wide x 89 cm overall height.  
A private Kentish collector **£150-200**



## Interiors, Art & Antiques, 5th Dec, 2024 09:30

- 91 George I and later field walnut chest of two short over three long drawers with quartered and feather banded top and drawers, fitted with brass swan neck handles. 100 cm wide x 58 cm deep x 90 cm overall height  
A private estate **£300-500**



- 92 An 18th/19th-century Portuguese/Spanish chestnut side chair, with distinctive "Portuguese Worked" hide seat and back, turned spindle under tier. and large dome close nailed detail. on a turned frame. 53 cm wide x 43 cm deep x 104 cm overall height, 49 cm height to the seat **£150-250**



- 93 A late 17th-century wainscot armchair with shaped architectural strap carved cresting monogrammed IR above a central lozenge carved panel, above a planked seat and swept and shaped arms. on a turned, underframe, united by cross stretchers. 63 cm wide x 52 cm deep x 116 cm overall height, 42 cm height to the seat.  
A private Kentish collector. **£300-400**



- 94 A 16th/17th pine single-door wall cupboard, possibly Italian or German with moulded cornice, bolection and carved frieze above a central door carved with Jesus being baptised by St. John, flanked by a pair of caryatids in the form of Angels at prayer, the door is fitted with its original lock and iron key. 59 cm wide x 27 cm deep x 50 cm overall height.  
A private Kentish collector. **£300-500**



- 95 A George III stripped pine wall cupboard with a pair of astragal moulded glazed doors. 65 cm wide x 39 cm deep x 73 cm overall height. **£200-300**



## Interiors, Art & Antiques, 5th Dec, 2024 09:30

- 96 A well-drawn George II-style mahogany wingback armchair with roll-over arms, upholstered in aqua blue stuff over fabric, supported by a pair of boldly carved cabriole forelegs terminating in ball and claw supports, 88 cm wide x 89 cm deep x 113 cm overall height, 52 cm height to the seat. **£200-300**



- 97 A set of six Cromwellian-style oak and leather dining chairs, the set comprising four side and two armchairs, with decorative studded detail, supported by a turned underframe. A private Kentish collector **£300-400**



- 98 An 18th-century Indo-Portuguese colonial rosewood side table, the second half of the 18th-century Goan, has a ripple-moulded top and block-fronted frieze drawers fitted with two faux and two actual block-fronted frieze drawers with heavy brass furniture, typically supported by a bulbous and elaborate turned underframe., 105 cm wide x 65 deep x 80 cm overall height. Formerly of Donnington Castle House, near Newbury, Berkshire **£200-300**



- 99 A late George III mahogany secretaire bookcase, the pediment inlaid with a fouled anchor (1805?), above a pair of shield-shaped astragal glazed doors, the base with sliding top drawer with painted satinwood banded pigeon holes and cupboard, the carcass fitted a further three long drawers on shaped bracket feet, 111 cm wide x 56 cm deep x 251 cm overall height **£300-500**



- 100 An early 18th-century three-panel oak coffer with solid plank top, supported by end stile supports. 120 cm wide x 42 cm deep x 70 cm height. A private Kentish collector **£200-300**



## Interiors, Art & Antiques, 5th Dec, 2024 09:30

- 101 A George Smith of London deep buttoned hide Captain's Swivel Chair, with close nailed dark tan upholstery, supported by a swivel and rocking base with castored feet. 66 cm wide x 67 cm deep x 81 cm overall height, 45 cm height of seat **£800-1,200**



- 102 A George III satinwood and parquet line inlaid tea table, the top opening to reveal a naively painted interior, on square tapering supports 90.5 cm wide x 44.5 cm deep x 76 cm height. **£200-300**



- 103 A 16th-century Vernacular oak Meal Ark/Coffer, with a vaulted top with integral wooden hinges over a body with clamped board construction on stile supports, 108 cm long x 48 cm deep x 58 cm overall height. A private Kentish collector **£300-400**



- 104 A 19th century mahogany twin pedestal dining table, with rounded moulded edge, on wrythen vase columns, and brass lion paw capping and castors, 197cm long, 110 cm wide **£350-450**



- 105 A Charles I oak joint stool with a single piece top the frieze carved with lunettes and with turned slender cup and cover turned legs united by cross stretchers. 44 cm wide x 26 cm deep x 55 cm overall height, together with a small late 17th-century oak bible box with an inclined lid fixed by black iron external hinges, the frieze carved with Vitruvian scrolls. 42 cm wide x 26 cm deep x 26 cm high. A private Kentish collector **£300-400**



## Interiors, Art & Antiques, 5th Dec, 2024 09:30

- 106 A Charles I documentary walnut side chair, by repute formerly in the ownership of Charles I, bearing an old brass plaque with the engraved legend "This Chair Belonged To King Charles I and was presented to Mr Thomas Cochrane (1st Lord Cochrane of Cults?) by HRH Prince of Battenberg", with scroll carved upright terminals a mask carved top rail above stuff over velvet upholstery with barley twist back and underframe, 50 cm wide x 50 cm deep x 112 cm overall height, 52 cm height to the seat.



A private Kentish collector **£500-700**

- 107 A George III oak pot board dresser base with a planked top and three frieze drawers, over a silhouette cut frieze, the pot board below supported by bracket feet, 145 cm wide x 42 cm deep x 76 cm overall height.  
A private estate **£500-700**



- 108 A William III bobbin-turned oak back stool with a floating panel seat, the underframe of conforming bobbin form with cross stretcher and high rance. 47 cm wide x 50 cm deep x 91 cm overall height., 42 cm height to the seat.  
(Qty: 2)  
A private Kentish collector. **£200-300**



- 109 An early 19th-century English elm cricket table, together with a vernacular 19th boarded stool with "S" pierced oval top, a 19th-century circular milking stool with an extremely thick dished top and turned legs below, and a 17th-century style joint stool. (4)  
A private Kentish collector **£200-300**



## Interiors, Art & Antiques, 5th Dec, 2024 09:30

- 110 A pair of reconstituted stone decorative bouquet finials, 35 cm high. **£200-300**



- 111 A 19th century painted wood hanging corner cupboard, the twin doors depicting the Wise Men before the Virgin Mary and Christ, enclosing shelves, 58 cm wide, 92 cm high, 39 cm deep **£200-300**



- 112 An 18th-century single-door hanging corner cupboard with carved decoration, and moulded borders, 52 cm x 86 cm, and a large George III pine open corner cupboard fitment. **£200-300**



- 113 A composite suite of mid-century teak and teak effect furniture, comprising a sideboard, extending dining table and Vanson chairs, tall chest and two coffee tables, **£500-700**



- 114 George III Sheraton Period "Fiddle-back or Lace" figured mahogany tambour topped lady's boudoir writing table, the tambour opening to reveal a green tooled leather interior, over a pair of short frieze drawers with crossbanded frieze drawers a further faux drawer with folding bale handle to each side, supported by square tapering legs with conforming figured panels, 77 cm wide x 57 cm deep x 86 cm overall height, 57 knee clearance below frieze.  
A private estate **£200-300**



## Interiors, Art & Antiques, 5th Dec, 2024 09:30

- 115 An early 18th-century walnut chest of two short over three long drawers each with "Running Dog" parquetry borders and teardrop handles, supported on shaped bracket feet. 99.5 cm wide x 55 cm deep x 93 cm overall height. **£200-300**



- 116 A George III provincial Oak cupboard-based dresser and rack, the rack with a decorative shaped cornice and frieze above two shelves with cup hooks, the panelled base with three frieze drawers above two fielded panel doors and a matching central panel. supported by low stile feet. 148 cm wide x 45 cm deep x 206 cm overall height.  
A private Kentish collector **£300-500**



- 117 A primitive vernacular oak/elm form stool, 19th century, with thick knarled rectangular top over a base with shaped stile ends and cross stretcher with pegged ends. 91 cm long x 24 cm deep x 46 cm overall height  
(Qty: 4)  
A private Kentish collector **£300-400**



- 118 A part 17th century oak Dole cupboard, with a carved single door above a lower section of a central door with spindle panels flanked by further spindle panels framed by stiles of solid holly and laburnum chevrons, on a later turned base with Doric column supports. 89 cm wide x 29.5 cm deep x 115 cm overall height.  
A private estate **£500-800**



- 119 An unusual early 18th-century Vernacular oak child chair, probably Lancashire, with moulded arched back open bar splats and turned supports above a close nailed hide seat, supported by a turned underframe with high set rance/stretcher. 46 cm wide x 36 cm deep x 89 cm overall height, 38 cm height to the seat, together with a small (child's?) six-plank coffer with gouge cut and primitive incised decoration, the top secured with staple hinges and hasp and staple lock, supported by shaped end supports. 60 cm wide 32 cm deep x 44 cm overall height. **£200-300**





## Interiors, Art & Antiques, 5th Dec, 2024 09:30

- 120 A Large 17th century and later oak Court Cupboard, dated 1665, with guilloche and lozenge carving, the upper section with three panelled cupboard doors flanked by turned pillars the base with a large pair of cupboard doors with Solomonic columns. and plinth base, 180 cm wide x 69 cm deep x 169 cm overall height. **£300-500**



- 121 Victorian "D" shaped black lacquer and parcel-gilt overmantel mirror, 138 cm wide x 160 cm overall height. **£250-350**



- 122 In the manner of Druce & Co of London, an Edwardian inlaid figured satinwood oval centre table the top inlaid with an ivorine strung fan burst design above a crossbanded edge and "ribbon" inlaid frieze, supported by well-drawn slender swept legs united by a shaped cross stretcher. 55 cm wide x 44 deep x 70 cm overall height.  
A private estate **£150-250**



- 123 A George I and later oak writing bureau, the fall opening to reveal an interior of pigeonholes and concealed drawers above a central well. The carcass fitted two long and two short drawers flanking a crescent kneehole, supported by turned bun feet. 89 cm wide x 54 cm deep x 103 cm overall height, 73 cm height to the fall. **£200-300**



- 124 A Charles II small, Child's three-panel oak coffer, the stile and frieze with carved stylised lunettes, 82 cm wide x 42 cm deep x 52 cm overall height.  
(Qty: 2)  
A private Kentish collector **£200-300**



## Interiors, Art & Antiques, 5th Dec, 2024 09:30

- 125 A pair of Queen Anne-style wing-backed "Lords & Ladies" armchairs. with oatmeal, Damsac effect upholstery with walnut underframe, 85 cm wide x 90 cm deep x 116 cm overall height. **£300-500**



- 126 A 19th century figured mahogany kneehole partner's writing desk with established inset tooled leather top and thumb moulded edge, above three frieze drawers to each side and a further six short drawers and a pair of figured cupboard doors to the opposing side. supported by simple plinth feet. 150 cm x 102 cm x 78 cm overall height x 59 cm knee clearance. **£500-700**



- 127 Tom Robertson for A.H McIntosh, a Mid-Century Vintage 'Dunvegan' dining set, comprising an extending dining table, eight chairs including two carvers and six side chairs, and a large sideboard. 214 cm long x 47 cm deep x 75 cm high , the sideboard, 237 cm open/ 160 closed x 92 cm x 73 cm high , the table. **£400-500**



- 128 A 1970s Pieff Eleganza rosewood dining table and six chrome chairs, the rectangular top table on tubular chrome supports and cap feet, top 180 x 90 cm, 73 cm high, the six chairs with cream leather upholstery, open arms and tubular chrome frames, Pieff labels and upholstery under the seats. CITES Article 10 Certificate No. 24GBA10LHCR19 (Qty: 7) **£200-300**



- 129 A George III serpentine-fronted knife box with parquet line stringing, opening to reveal a fitted interior with a part set of 18th-century silver handled knives and forks marked "Stirling" 22 cm wide x 23 cm deep x 34 cm overall height. **£300-500**



## Interiors, Art & Antiques, 5th Dec, 2024 09:30

- 130 George III Chippendale period mahogany kneehole writing desk with brushing slide and canted corners fitted a long frieze drawer with concealed drawer below, a further two banks of three short drawers flanking a central cupboard door, supported by shaped bracket feet. 93 cm x 50 cm deep x 84 cm overall height.  
A private estate **£300-400**



- 131 An early George III "Plum Pudding" mahogany circular snap top tripod table, with boarded birdcage action over a heavy gun barrel column, and broad knee cabriole legs. 89 cm diameter x 72 cm overall height **£200-300**



- 132 An early George III mahogany provincial Batchelor's chest of drawers, with a moulded top above an unusual drawer configuration of a brushing slide four short over two long drawers, supported by low bracket feet on massive swivel castors. 91 cm wide x 54 cm deep x 73 cm overall height. **£300-400**



- 133 An early 19th-century rustic elm cricket table with a planked top of good mellow colour, the base with three tapering angular legs. 56 cm diameter **£200-300**



- 134 An 18th-century Vizagapatam worked Macassar ebony and penworked ivory Anglo-Indian deed box, the top inlaid with a central spray and within borders of flowers and vines, the hinged cover opening to reveal a lift-out tray and concealed sovereign drawers. 56 cm wide x 40 cm deep x 14 cm high, 10.5 kg gross weight  
Ivory certification reference M14H94FL.  
**Please be aware, that if you are bidding from outside of the UK, the receiving country may have restrictions on the transportation of Ivory across their international borders. £400-600**



## Interiors, Art & Antiques, 5th Dec, 2024 09:30

- 135 A Louis XV-style bur walnut and oak serpentine bureau plat, late 19th century, with gilt metal mounts, the tulipwood cross banded top inset with a shaped Morocco leather writing surface, fitted a single shaped frieze drawer, supported by shaped cabriole legs, bearing an Edwards & Roberts (furniture dealers) paper label. 110 cm wide x 56 cm deep x 77 cm overall height, 59 cm knee height.

xv

By construction, timber, mounts and format this is most likely English. **£300-500**



- 136 Ralph Lauren Collection; a pair of 'Allen' table lamps, contemporary, in polished nickel with glass rods, together with accompanying shades, with original packaging (unused), 82 cm overall height. **£400-600**



- 137 A pair of gilt metal "Hollywood Regency" style Egyptian-themed table lamps modelled as seated gilt metal Pharaohs, 26 wide x 49 cm overall height. **£200-300**



- 138 A "Hollywood Regency" gilt brass standard lamp with a bridled swan mount, 170 cm overall height, and an alabaster and gilt metal table lamp with a figural mount in the form of an infant Poseiden. **£200-300**



- 139 A carved wood and gilt gesso standard lamp with a turned body carved with acanthus, and plantain leaves, supported by three scroll legs over a tripartite base and bun feet. 198 cm overall height. **£200-300**



## Interiors, Art & Antiques, 5th Dec, 2024 09:30

- 140 An Edwardian carved wood and gilt gesso pier glass with an inverted breakfront outline with rose garland mantle and acanthus tongue border, fitted a bevel edge mirror plate. 98 cm x 51 cm  
A private estate **£150-200**



- 141 A 19th-century oval carved wood and gilt gesso wall mirror with pierced rococo a feather plume mantle, fitted with a bevel mirror plate. 81 cm wide x 140 cm overall height. **£200-300**



- 142 A muted red/pink ground Austrian Savonerie style, neo-classical carpet, C1900, with a large subtle central medallion and ivory borders of scrolls, swags and floral garlands, 606 cm x 412 cm  
A private collection **£500-700**



- 143 A large 20th-century "Country House" claret ground Meshed carpet the central boss on a field of swirling tendrils and flowers within an indigo border, 461 cm wide x 342 cm  
A private estate **£300-500**



- 144 A plum-coloured ground Baktiari rug with a central diamond lozenge, within a dark indigo geometric border. 166 cm x 114 cm **£100-200**



## Interiors, Art & Antiques, 5th Dec, 2024 09:30

- 145 A red ground Qashqai rug with two diamond lozenges on a central pole within multiple borders. 170 cm x 107 cm **£100-200**



- 146 An Indian ivory ground "Agra" carpet, 20th/21st century, with open Arabesques, and sprays of flowers, within a compartmented black border, 362 cm x 272 cm  
A private estate **£800-1,200**



- 147 A red ground Karaja strip runner with nice lozenges on a central pole, within multiple borders, 295cm x 70 cm, together with another smaller Karaja runner. **£100-200**



- 148 An early 20th-century mahogany cased twin fusee 8-day bracket clock, with an arched top, fitted a silvered Roman dial indicated by blued poker and halberd hands, the movement chiming the hours and the half hours as a passing strike, the case with inlaid brass stringing with lancet brass sound grilles, supported by brass bun feet. 30.5 cm wide x 20 cm deep x 45 cm overall height.  
A private estate **£150-250**



- 149 Sollo of Leeds, a George III mahogany stick barometer/ thermometer, with architectural pediment, silvered register plate, exposed tube "Bull's Eye" turned reservoir cover, 100 cm high. **£200-300**



## Interiors, Art & Antiques, 5th Dec, 2024 09:30

- 150 A part late 17th-century brass, 30-hour lantern clock, by an undescrbed maker, with urn finial cast bell and decorative frets, now fitted an odd-legged deadbeat escapement, the silvered dial with Roman increments and a single iron hand above a rose engraved centre. supported by small bun feet. 15.5 cm wide x 14.5 cm deep x 38 cm overall height. A private estate **£400-600**
- 151 Thomas Lister of Luddendon (Yorkshire) an 18th century 30-hour longcase clock, with brass dial, and silvered chapter ring, moon phase aperture and secondary and calendar rocker apertures, the oak case with later chip carving 30 cm dial x 50 cm wide x 30 cm deep x 202ccm overall height. Thomas Lister (II) is recorded as working 1760-1795, see page 487 of Watchmakers and Clockmakers of the World, The Complete 21st Century Edition, Loomes, Brian. A private estate. **£200-300**
- 152 John Liddell of Morpeth, a George III mahogany tavern wall clock with, a piece painted Roman dial, the four pillar eight-day movement chiming the hours on a single bell the trunk with lancet arched door. 48 cm wide x 28 cm deep x 180 cm in height. John Liddell is recorded as working in Morpeth (Northumberland) between 1758-1820, see page 484, Watchmakers & Clockmakers of the World (CTCE) Loomes, Brian. **£600-800**
- 153 A Richard & Cie, a Louis XV-style eight-day red tortoiseshell balloon, mantle clock, early 20th century, the 8-day movement chiming the hours on a single bell, fitted a segmented porcelain Roman dial, halberd hands. and mask of Helios pendulum. 43 cm overall height **£200-300**
- 154 A Regency bronze and ormolu mantel timepiece, the drum dial supported by Atlas, with an earlier replaced mechanism by G. Murgatroyd of London, on a decorated circular ormolu base, 23 cm high. **£200-300**



## Interiors, Art & Antiques, 5th Dec, 2024 09:30

- 155 A French Corniche cased chiming carriage clock, bearing the monogram GL (Gay & Lamaille?) and numbered 2582, with one piece white enamel Roman dial and bale handle, 8.5 cm wide x 7.5 cm deep x 17 cm to the top of the handle, together with a French "Anglaise Riche" variant carriage timepiece. 8 cm wide x 5 cm deep x 15 cm height to the handle. **£200-300**



- 156 Stephen Willmott (Wilmot), London A Queen Anne/George I seaweed marquetry cased walnut longcase clock, the eight-day four-pillar movement chiming the hours on a single bell, the 31.5 cm brass dial with "Boys & the Crown" spandrels, fitted silvered chapter ring with the secondary dial at noon and calendar aperture at six- o'clock, the hood with bolection-moulded top above a trunk with circular glass lenticle, the plinth has been reduced and painted black—50 cm wide x 23 cm deep x 211 cm overall height, 31.5 cm dial.
- Stephen Willmott (Wilmot) is recorded as working in St.Giles in the Fields parish. He was apprenticed to Edward Stanton in 1667, made a member of The Clockmakers Company in 1674, and died in 1721.



See page—845 of Watch & Clockmakers of the World (CTCE), Loomes, Brian.

A private London estate

Stephen Willmott (Wilmot) is recorded as working in St.Giles in the Fields parish. He was apprenticed to Edward Stanton in 1667, made a member of The Clockmakers Company in 1674, and died in 1721.

See page—845 of Watch & Clockmakers of the World (CTCE), Loomes, Brian.

For a clock by the same hand please follow the link below  
Bonhams : A late 17th/early 18th century walnut marquetry longcase clock Stephen Willmott, in Token House Yard, London **£1,500-2,000**

- 157 Robert Austin of Challock (Kent), An 8-day, longcase clock No.140, the four pillar movement chiming on a single bell, the brass broken arch dial with applied silvered Roman chapter ring secondary dial and date aperture, the case with long trunk door. 30 cm dial width x 48 cm wide x 202 cm overall height x 24 cm deep.
- Robert Austen/Austin is recorded from 1730-1793, He produced a number of clocks and some are(as is this example) numbered, see page 29 of Watch and Clockmakers of the World, Complete 21st Century Edition, Loomes, Brian. **£500-600**





## Interiors, Art & Antiques, 5th Dec, 2024 09:30

- 158 A mid 20th-century Jaeger Le Coultre manual wind, skeleton mantle clock, with brush gilt batons to a conforming rectangular case, raised on square feet, 19.5 cm high x 17 cm high. **£200-300**



- 159 A French Napoleon III gilt bronze 8-day cartel clock by A.D Mougín, the movement chiming the hours and half as a passing strike, the slightly convex enamel Roman dial, The case with urn and bow decoration. 22 cm wide x 49 cm high. **£200-300**



- 160 † Willi Soukop RA (1907-1995) Austrian/British, 'Motorcycle Rider and Pillion Passenger', patinated bronze on a rectangular base, monogrammed and numbered 8/9, signed 'Soukop' to the underside of the base, 13.5 cm high x 11 cm wide.



Soukop came to England in 1934, moving to London in 1945 where he taught at Bromley, Guildford and then Chelsea Schools of Art. He was an early teacher of Elisabeth Frink. Became Master of Sculpture at the RA Schools. He died in Glasgow **£300-500**

- 161 A large late 19th century patinated bronze candelabra, the six sconces on leaf scroll entwined arms, with three putti at the base, 76 cm high. From the estate of the late Keith Flint (1969-2019), former member of The Prodigy. Ex Lot 6, 'The Keith Flint Collection', 7th November 2019. Accompanying auction catalogue present. **£400-600**



- 162 After Seiya, a Japanese bronze patinated spelter figure of a stalking tiger, early 20th century, unmarked. . 37 cm long, A private Kentish estate **£200-300**



## Interiors, Art & Antiques, 5th Dec, 2024 09:30

- 163 † John Robinson (1935-2007) Australian, 'Boy and Dog', No. 4 from a limited series of 9, a life sized patinated bronze study, 112 cm high x 55 cm wide x 95 cm deep. Purchased in 1971 from Crowther of Syon Lodge. Private collection **£1,500-2,000**



- 164 A pair of large green-patinated bronze recumbent lions after Antonio Canova, 20th century, the original sculptures created to stand sentry to the papal tomb of Clement XIII IN 1792, 94 cm long x 32 cm high. **£1,500-2,000**



- 165 † Enzo Plazzotta (1921-1981) Italian, 'Study for an Arabesque', 1972, patinated bronze figure of a dancer, numbered 2/9, Plazzotta stamp and foundry mark 'Fonderia Luigi Tommasi Pietrasanta, 39 cm high x 40 cm wide. Catalogue Raisonné p94. **£1,200-1,500**



- 166 Charles Robinson Sykes (1875-1950), British 'Adam and Eve', a rare bronze sculpture of two nude figures embracing standing on a rocky base, signed in the cast 'ADAM and EVE' and 'Charles Sykes', mounted on a grey-green mottled marble base, bronze 29.5cm high, total height 40cm high. **£1,000-1,500**



- 167 A pair of decorative George III-style giltwood twin branch wall sconces, decorated with eagles below ribbon bows, 92 cm high x 33 cm wide. **£400-600**



## Interiors, Art & Antiques, 5th Dec, 2024 09:30

- 168 A collection of decorative Arts and Crafts metalware, comprising a large pewter lidded jug, inset with cabochon enamels, 21 cm high, a copper lidded jug with repousse decoration, 18 cm, a cylindrical hammered copper inkwell on three feet, 7 cm high, and three further items. **£150-250**



- 169 A large collection of literature relating to Moorcroft Pottery, to include two volumes by Paul Atterbury, three by Fraser Street and an extensive archive of Moorcroft Collectors Club magazines, many in folders. **£100-200**



- 170 Four pieces of contemporary Moorcroft, comprising an 'Inglewood' pattern vase, designed by Philip Gibson, decorated with birds, 2004, 30.5 cm, an 'Isis' pattern tall vase, designed by Emma Bossons, 2003, 31.5 cm, a 'Foxglove' large vase, designed by Rachel Bishop, 1993, 31 cm and a 'Landscape Medley' pattern vase, designed by Sian Leeper, 2005, 23 cm. (Qty: 4) **£400-600**



- 171 Two contemporary Moorcroft table lamps, in the Blackberry Bramble pattern, each on wooden stand, the baluster lamp 36 cm high (to top of lampholder and inclusive of base), the squat vase 27 cm. (Qty: 2) **£200-300**



- 172 Two contemporary large Moorcroft table lamps, in the 'Queens Choice' pattern, 31 cm high (from fitted base to top of lampholder), and 'Anenome' pattern, 33 cm. **£150-250**



## Interiors, Art & Antiques, 5th Dec, 2024 09:30

- 173 Four boxed contemporary Moorcroft vases, comprising a large limited edition vase in the 'Swallows' design, no.109/500, designed by Rachel Bishop, dated 1997, 25.5 cm, a limited edition 'Daffodil' vase, numbered 71/100, 15 cm, an Elizabeth II 'Golden Jubilee' pattern vase, designed by Emma Bossons, dated 2001, 15.5 cm high and a 'Kingfisher by Bridge and River Scene', designed by Sian Leeper, dated 2005, 16 cm high. **£250-350**



- 174 Four boxed contemporary Moorcroft vases, comprising a large 'African Bride' pattern vase, limited edition numbered 79/200, designed by Rahel Bishop, 31 cm, a 'Western Isles' tall baluster vase, designed by Sian Leeper, 2006, 28 cm, a 'Golden Jubilee' vase, designed by Emma Bossons, 2001, 16 cm and a 'Verley' pattern vase, Rachel Bishop original design, 1997, 19 cm. (Qty: 4) **£250-350**



- 175 A collection of boxed contemporary Moorcroft items, comprising: a 'Longwing' pattern vase, designed by Sian Leeper, No. 181, 2007, 24 cm high, a 'Lamia' pattern vase, designed by Rachel Bishop, 1995, 20.5 cm, a 'Cosmos' vases, designed by Rachel Bishop, 2000, 16 cm, a 'Hartgring' pattern vase, designed by Rachel Bishop, 2002, 11 cm, an 'Anna Lily' vase, designed by Nicola Slaney, 1998, 17.5 cm, an 'Anenome' pattern trinket dish, 20 cm wide in Selfridges branded outer sleeve and a 'Hartgring' pin dish, 12 cm diameter, together with a loose 'Clematis' pattern shallow bowl, 11.5 cm diameter. (Qty: 8) **£300-400**



- 176 Four contemporary Moorcroft items, comprising a large limited edition vase in the 2006 'Proud as a Peacock' pattern, signed, 36/200, 31 cm, a 'Winds of Change' vase, designed by Rachel Bishop, dated 99, 19.5 cm, a limited edition floral vase by Rachel Bishop, numbered 34/75, dated 2005, 11 cm and a 'Finches & Apples' vase, dated 2004, 10.5 cm. (Qty: 4) **£200-300**



- 177 A tall Moorcroft limited edition vase in the 'Lark Ascending' pattern, designed by Philip Gibson, numbered 249/350, dated 2001, signed, 28 cm in original box, together with a baluster vase in the 'Loch Hope' pattern, also designed by Philip Gibson, dated 2004, 16 cm, in original box, a 'Prairie Summer' vase, designed by Rachel Bishop, 2001, 23.5 cm (unboxed) and a 'Anenome Tribute' vase, designed by Emma Bossons, 25.5 cm, (unboxed). (Qty: 4) **£250-350**



## Interiors, Art & Antiques, 5th Dec, 2024 09:30

- 178 A collection of eight Moorcroft enamel items, in original boxes, to include two gilt paperweights, a limited edition 'Safari' cylindrical box by S. Dance, three further cylindrical boxes, a silvered paperweight and an unboxed miniature baluster vase, decorated with swifts, 11 cm high.  
(Qty: 8) **£200-300**



- 179 An 18th-century Wheildon "tortoiseshell" dessert plate with manganese glaze and scalloped edge, 23 cm diameter, together with another with three colour glaze within a gadrooned rim, 24 cm diameter, a collection of Prattware including Samson jug, Bacchus jug, Satyr jug, a set of six creamware dessert plates painted with fancy birds in colours within moulded borders, bearing faux gold anchor marks to the bases **£200-300**



- 180 A small old collection of Roman pottery vessels (af) and remaining shards and knapped flint arrowheads. No excavation details remain as this lot is from a deceased estate. A private Kentish collector **£100-200**



- 181 An extensive French Limoges Deco Chambord Giraud dinner service, printed decoration of birds and game, comprising three covered tureens, two open soup tureens, teapot, covered jars, cruets, egg cups, cups and saucers, serving dishes, shallow bowls, trivets, plates and others. **£300-500**



- 182 Bjorn Winblad for Rosenthal Studio-Line, a 'Magic Flute Gold' porcelain coffee service, comprising coffee pot, six cups and saucers (with one additional cup), and a covered sugar bowl with cream jug, on a stand. **£400-600**



## Interiors, Art & Antiques, 5th Dec, 2024 09:30

- 183 A Minton bone china cabinet plate painted with a bird near her nest of eggs within tooled gilt, blu Celeste and pierced borders, 24 cm diameter, a Vienna porcelain cabinet plate, painted with a lovelorn young lady attended by cupid, 18 cm diameter, and collection of early 18th century French and English pistol-gripped table knives, including a probably St.Cloud blue and white example, a Worcester blue and white 18th-century mask head jug, and other 18th/19th-century porcelain.  
A private Kentish collector **£200-300**



- 184 A Shelley Art Deco Vogue Green Blocks pattern part tea service, pattern number 11758, comprising a square dish, 25 cm wide, six side plates, a milk jug, and five cups and saucers.  
**£200-300**



- 185 A Meissen 'Blanc de Chine' glazed eight-piece dessert service, late 19th century/early 20th century, the set comprising two oval low fruit comports two high cake baskets and three circular dishes, all reticulated and moulded with stylized "Forget-me-not" strapwork, all bearing blue crossed sword marks to the bases (7 marks cancelled) 29 cm wide x 14 cm high. **£500-600**



- 186 A pair of Gouda Pottery candlesticks, made for Liberty, on spreading bases, 26.5 cm high, together with a pair of Bretby art pottery vases, in the Arts & Crafts taste, with twin loop handles and mottled red glaze. 17 cm high, impressed marks and numbered 2759.  
(Qty: 4) **£150-250**



- 187 A large collection of Staffordshire figures, to include an elephant, a bull-baiting group, Daniel and the Lion, Admiral Sir Charles Napier, Tom King, a watch holder, and others, largest 27 cm x 24 cm **£200-300**



## Interiors, Art & Antiques, 5th Dec, 2024 09:30

- 188 A Burmantofts faience Anglo-Persian inspired miniature baluster vase, by Leonard King, late 19th century, painted in a typical palette with flowers on a white ground, monogrammed, numbered D420 2257, with impressed factory mark, 12 cm high. **£200-300**



- 189 A large 19th-century faience "Tonca" tobacco jar of ovoid form painted in colours with domed brass cover, 21 cm, together with probably a French faience dessert plate painted with cut blooms and insects in low-fired colours, a small group of early Staffordshire pottery figures including a Walton figure of a lady "Archar" and other figures for restoration. **£150-200**



- 190 A Hispano-Moresque copper lustre circular dish, possibly Valencia early 16th century, with a raised central boss within leaf moulded borders (restored) 38 cm diameter  
A private collection **£300-400**



- 191 A Wemyss pottery Cabbage Rose wash set, comprising a wash basin, water jug, large pail and a draining bowl, with painted marks to base for T Goode & Co, the washbowl 40 cm diameter, the pail 28.5 cm high. **£600-800**



- 192 A 17th-century Bellarmine (Bartmann) bottle with a distinctive, mask, loop handle and pinwheel decoration, 24 cm overall height. **£200-300**



## Interiors, Art & Antiques, 5th Dec, 2024 09:30

- 193 A 17th-century Bellarmine (Bartmann) bottle with a distinctive mask, loop handle, pinwheel decoration, 24 cm **£200-300**



- 194 A collection of Royal Crown Derby Imari paperweights, the majority with boxes, comprising: Green Woodpecker (gilt stopper), Debonair Bear (silvered stopper), Woodland Pheasant (gilt stopper), Drum Teddy Bear (gilt stopper), Cheetah Cub (gilt stopper), Mandarin Duck (silvered stopper), Little Owl (gilt stopper), Noah's Ark (silvered stopper), Large Hedgehog (gilt stopper), Meadow Rabbit (silvered stopper), Penguin & Chick (silvered stopper), Derby Wren (silvered stopper), Puffin (silvered stopper), Koala & Baby (gilt stopper), 7 Spot Ladybird (silvered stopper), Kingfisher (unboxed, silvered stopper), Squirrel (unboxed, gilt stopper) and Wren (unboxed, silvered stopper), together with two Crown Derby Imari Pattern miniature boxes, also boxed. **£300-500**



- 195 An English rectangular slipware baking or loaf dish, late 18th century with combed decoration within a thumb-crimped border, 47 cm long x 38 cm wide, a brown slip glazed rectangular divided vegetable dish, an 18th-century Talevera circular dish painted in verdant tones heightened in ochre. 37 cm diameter  
A private Kentish collection. **£200-300**



- 196 Edward Hald (1883-1980) for Orrefors, a Fiskgraal glass vase, with internal decoration of fish swimming amongst weed, engraved 'ORREFORS Graal No.11297, Edward Hald', 15.5 cm high. **£300-500**



- 197 A René Lalique 'Vases' pattern bowl, number 3219 (c.1921), with stained blue floral patterns outlining bulbous vases, etched 'R Lalique' to base, 6.5 cm high x 18 cm diameter, together with a contemporary Lalique Rabbit, 5 cm high, and a miniature Lalique scent bottle, 4 cm. **£250-350**





## Interiors, Art & Antiques, 5th Dec, 2024 09:30

- 198 A collection of 18th-century English /Irish drinking glasses including an Irish trumpet ale with bubble inclusion over a folded foot, double knopped air twist ale, a facet cut stemmed ale flute, a writhen boot form stirrup cup, a probably Scottish clear glass toddy lifter, a Nailsee flask of flattened form and a Mary Gregory type green glass cream jug an early 19th-century amethyst glass decanter and other English drinking glasses., two 18th/19th century stained and leaded glass armorial shield-shaped panels. **£200-300**



- 199 A late 17th century English green glass "Onion" type wine bottle, with string ridge to the neck, the body showing the fusing of kiln slag, 15 cm diameter x 15 cm high **£200-300**



- 200 A large Derbyshire fluorspar 'Blue John' egg hand cooler, early 19th century, mounted on a white marble stand. 12 cm long x 8 cm diameter, together with an 18th century bronze nest of seven apothecary's weights. **£300-400**



- 201 Autographs of political interest: Man and Woman outlines coloured by Nancy and Elwen Cameron (aged 6 and 4), both signed by Rt. Honourable David Cameron in ink, 29 x 20 cm each, framed and glazed 44 x 34 cm each, and another two outlines filled with handwritten text and signed by Rt Honourable Gordon Brown and Sarah Brown, dated February 2010, each sheet 29 x 20 cm, framed and glazed 44 x 58.5 cm each **£200-300**



- 202 A pair of scarce possibly American 18th-century iron pipe tongs with sprung mechanism, 37.5 cm long, a 19th-century copper coaching horn in a leather case 91 cm long, together with a large 19th-century copper "Navie's" kettle with sweated joints and swing handle, 36 cm long, a smaller similar example, a 19th century Welsh pierced and shaped brass crescent wall pocket, a 17th-century black iron chimney crane, 19th-century brass and iron kettle trivet/ footman and a 19th century German painted leather fire bucket and other items. **£200-300**



## Interiors, Art & Antiques, 5th Dec, 2024 09:30

- 203 "Constructed from the timbers of Westminster Hall, London", a George IV documentary turned oak and ivory snuff box, the central ivory plaque bearing the legend 'This Box was made of a part of the original timbers of Westminster Hall...For the coronation of King George IV', 10 cm diameter, together with an 18th-century carved "John Wesley" coquilla snuff box, 10 cm long, a turned coquilla pomander, a coquilla acorn, and a late 18th-century chip carved "Book" form box. Ivory certification reference U1THE9D9 **£300-400**



- 204 A 19th-century miniature naval cannon with a tapering girdled body on a stepped oak carriage with pegged wooden wheels, 16 cm long, together with a Charles Frodsham of London, "The St. James's House Company" mariners world timepiece Serial Number 022/500, the turned drum form body with white metal full-masted tall ship on a green marble socle. 15 cm diameter x 26 cm overall height. **£200-300**



- 205 A 16th/17th -century and later carved oak bust of Anne of Cleves with signs of former polychromic painted decoration, the hollow-backed figure on a moulded base. 36 cm wide x 45 cm high x 21 cm deep. A private Kentish collection. **£500-700**



- 206 A 17th-century Thomas Palmer (FL.1641-70) bronze skillet, 27 cm long, together with an 18th-century crescent brass cream skimmer engraved with a spread eagle, two 18th-century pastry jiggers/crimpers, a French 16th/17th-century pestle and mortar, and other kitchen items. **£300-400**



- 207 A 17th or 18th-century bronze 'thunder mug' (signal cannon), with loop handle and ribbed centre, on a spreading base, 14 cm high, together with a cast iron and painted Royal Coat of Arms, 21 cm x 28 cm. (Qty: 2) **£300-500**



## Interiors, Art & Antiques, 5th Dec, 2024 09:30

- 208 A primitive iron and beech rushlight, probably late 18th century, with a single candle holder, 20 cm high, an 18th-century "Pigs Tail" oak and iron candle holder, 19 cm high, An 18th-century Scottish cruise lamp an early 18th-century brass squat candlestick, two further 18th-century brass candlesticks and a pair of French 19th-century altar candlesticks, and a bell metal candlestick with dished base and a pair of 19th-century heavy cast bronze chalice form censers, and a "Lucerne" type rise and fall whale oil lamp with three fonts and a reflector and a Victorian brass and cut glass oil lamp with vaseline glass shade over a Hinks Duplex burner and a decorative brass base.



A private Kentish estate **£200-300**

- 209 Minox VEF, Riga, sub-miniature "Spy Camera". Serial number 11947 with brushed chrome body, 8 cm closed, together with an Air Ministry, war time issue military, keyless stopwatch, dated 1941.

A private estate **£400-600**



- 210 Attributed to James Mein of Kelso; an early 19th-century Scottish mahogany magnum table coaster, the circular body with swept gadrooning and moulded decoration, fitted three off-set leather covered castors, 24 cm diameter x 5 cm high. Please see the footnotes.

A private Kentish collection.

**James Mein**, a family firm of cabinetmakers and upholsterers are recorded as working in Kelso as early as 1784. James Mein senior died on 7th November 1830 and the business which was latterly located in Roxburgh Street went bankrupt in 1851. James Mein supplied furniture to the 5th and 6th Dukes of Roxburghe for Floors Castle and items made by the company were sold in the Floors Castle, Sale on the Premises, by Christie's in 1990. **£400-500**



- 211 A Folk Art carved birch gingerbread mould, 18th/19th century with two graven images; a rider up and a figure assailed by a "black dog" 40 cm x 14 cm x 2.2 cm thick, together with a pair of 17th-century oak figural appliques. 39 cm x 9 cm, a 19th-century large primitive circular treen dish 35 cm diameter, a Possibly Irish 19th-century treen bowl, a treen bowl with Stubb handle and a treen ladle. a sewn hide 16th/17th century pilgrims bottle.

A private Kentish estate. **£200-300**



## Interiors, Art & Antiques, 5th Dec, 2024 09:30

- 212 A small South German rectangular iron strongbox, with overlaid strap bolsters faux keyhole the cover the top with swing bale handle. 28 cm x 13 cm x 12 cm.  
A private Kentish estate **£200-300**



- 213 A collection of milled and hammered silver coins, with other coins, comprising: Charles I Half Crown (date not visible), George V 'Rocking Horse' Crown 1935, Victoria Half Crown 1889, George VI Crown 1937, Frederick II (Prussia) 3 Kreuzers c.1780, 2 x George III Cartwheel Penny 1797, Charles II Maundy fourpence 1684, Charles I Half Crown (rubbed, possibly Tower Mint) 1635-6, 1 Kopek, Russian Empire 1842, George II Britannia Farthing 1754, Italian 1 Lira 1866, 2 x George III Imitation Guineas (one drilled), Geo II Britannia Half Penny (rubbed), George III Crown 1818, France 2 Francs 1840, Edward VII Coronation Medal, William IV East India 1 Rupee, George III Britannia Half Penny 1807, Frederick III 5 Marks Prussia 1888, Italy 5 Centesimi 1861, Napoleon III 1 Franc 1867, Austria 1 Florin 1884, Prussia Wilhelm II 2 Marks 1896, Germany 3 Marks 1914, Victoria Threepence 1890, William IV Britannia Fourpence 1837, George IV Shilling 1825, William IV coin, (rubbed, denomination and date not clear), S Africa 2 1/2 Shilling 1896, Germany 3 Marks 1908 and S Africa 2 Shilling 1896.  
(Qty: 29) **£200-300**



- 214 A collection of silver and other coins, comprising: Victoria Half Crown 1901, Victoria Crown 1899, South Africa 1 Shilling 1896, Victoria Half Penny 1861, Victoria 'To Hanover' Gaming Token 1837, Victoria 'Gothic' Florin 1872, Victoria Half Crown 1896, Victoria Half Crown 1890, Victoria Britannia Fourpence 1855, George III Shilling 1817, Victoria East India One Cent 1845, Victoria Manx 1 Penny 1839, Victoria Half Crown 1874, Victoria Double Florin 1887, Victoria Shilling 1887, Victoria Shilling 1840, Victoria Half Crown 1887, Victoria Half Crown 1898, Victoria Shilling 1887, Victoria Threepence 1887, Victoria Crown 1898, Victoria Half Crown 1887, Victoria Half Crown 1884, Victoria Half Crown 1887, Victoria Shilling 1883, Victoria Florin 1887, Victoria Double Florin 1887, Victoria Half Crown 1884, Victoria 'Gothic' Florin 1873, Victoria Sixpence 1838 and three further 19th century silver coins, badly rubbed and indistinct. **£200-300**



## Interiors, Art & Antiques, 5th Dec, 2024 09:30

- 215 A Staunton pattern boxwood and ebony chess set, late 19th century, the knights and rooks of both sides with red crown mark, the pieces with no other markings, weighted undersides and many with green registration lozenge label the kings 8.7 cm high, the pawns 4 cm, contained in a non-conforming mahogany box. **£200-300**



- 216 A scarce dated 17th-century iron toasting trivet stand, with a swivel head, the handle with the chiselled date 1644 and overlapping V's and the letter "P" and diamond device, with shaped and pierced terminal, 41 cm long. **£200-300**



- 217 A 17th-century South German strongbox/ Armada chest and key, the rectangular iron box with forge rivetted iron strapwork bound body with decoy keyhole and concealed lock to the cover, fitted a pair of heavy swing bale handles, 57 cm wide x 32 cm deep x 30 cm overall height. A private Kentish collector. **£500-600**



- 218 A George III Sheraton period figured satinwood and parquetry inlaid two-section rectangular tea caddy, strung in boxwood and crossbanded in tulipwood the top and front with sans shaded fan burst motifs. 20 cm wide x 11 cm deep x 11.5 cm overall height. Ivory certification reference SZR3HTX7. A private estate **£300-500**



- 219 An old replica Maori Mokomokai, (preserved head) with cowrie shell eyes, long auburn hair and Tomoko markings, the nose pierced with cord and beads and a shark's tooth. 9 cm wide x 11 cm long, the cranium without hair. A private estate **£150-200**



## Interiors, Art & Antiques, 5th Dec, 2024 09:30

- 220 A good collection of George III and later lorgnettes, to include two in tortoiseshell cases, others in unmarked yellow metal, a niello cased pair, a mother of pearl cased pair and others.  
**£400-600**



- 221 A 19th-century English(?) violin bow indistinctly stamped Dodd (?) with gold and silver mounts (both unmarked), mother of pearl and abalone shell inlay, and a "fiddle back" figured stick with a gold mounted tip. 73 cm long, 52 grams.  
A private estate **£200-300**



- 222 A Victorian 68 calibre percussion 'Tower' pistol, the lock bearing the legend Tower, a crowned broad arrow and dated 1845, fitted with a swivel rammer and brass furniture. 37 cm long, together with a Nock (Henry) of London ladies percussion boxlock 46-calibre "Muff" pistol, 15 cm long, an embossed copper powder flask and a leather and brass Dixon and Son shot flask.  
A private Kentish estate **£200-300**



- 223 An amber-handled jambiya, with gold applique and beaded girdle, fitted with a decorative silver scabbard inscribed with Arabic script, 35 cm long. **£200-300**



- 224 A WW1 Scottish Officers broadsword and scabbard with bell pommel ray skin wire lashed grip and simple crossguard with a watered blade with double fuller, the leather scabbard with frog, together with a gilt hilted Sandon & Co of London court sword and scabbard. 97 cm overall length.  
A private collection **£150-250**



## Interiors, Art & Antiques, 5th Dec, 2024 09:30

- 225 Three 19th-century Indo-Persian Tulwars 94 cm the longest, together with two ceremonial Taba (axes) with Damascened crescent blades and ebonized shafts. 67 cm long and a serpentine Persian, iron saddle axe head. **£200-300**



- 226 A WW2 Taylor's 'Eye Witness' double-edged fighting knife with original leather scabbard, fitted a brass pommel and compressed leather disc grip below a shaped brass cross guard, the double-edged diamond section blade bearing the manufacturer's name and logo. 30 cm, together with a late 1930s .177 German 'Tell II' compact air pistol with wooden grip plates, 14 cm long. **£150-200**



- 227 A 19th-century Turkish or Balkan 32 calibre percussion pepperbox boxlock pistol, 22 cm long, with silver Damasked iron barrels and an inlaid pistol grip with lanyard loop, together with a youth's Jambiya with an embossed silver scabbard and hilt. 21 cm long.  
A private estate **£200-300**



- 228 A 16th-century Spanish left-handed or parrying dagger, with a cruciform section blade simple cross quillion and bean-shaped pommel, 41 cm overall length, 31 cm length of blade. **£200-300**



- 229 A Victoria South Africa war medal with ribbon and 3 bars, together with conforming miniature, named to 1035 Gunner F C Hepburn, City Imperial Volunteers, the bars for Wittebergen, Transvaal and Cape Colony. **£150-250**



## Interiors, Art & Antiques, 5th Dec, 2024 09:30

230 A 1939-45 medal group to Cpl John Middleton, Princes of Wales Own Yorkshire Regiment (Green Howards) including a Meritorious and Long Service Medal, 1939-45 Star, Africa Star (8th army), North West Frontier 36-37, North West Frontier 37-39, Victory Medal, Defence Medal, Regular Army LC, GC with clasp and others, accompanied by a miniature set of six and ribbon bar with rosette. and a presentation pewter charger, the lot also contains documentation relating to the public service and military career of John Middleton Yeoman Warden at the Tower of London Army Service book (Certificate of Service) Nato Certificate Dec '64 - June '67 Allied Forces Southern Europe. Honours and Award Certificate, letter from British Embassy March 15, 1963, British Empire Medal + others, Tower of London c. 1950s until c. 1978. **£400-500**



231 A scarce WW2 SOE/OSS assassin's sleeve dagger and scabbard. the pommel-topped perpendicular hilt with a concave triangular section blade, the original simple ridged arm sheath fitted with a securing strap for arm or leg fixing. The dagger bears no incriminating maker's marks. 18 cm overall length of the dagger alone.

**Note:**

These daggers are scarce because very few were issued to only some of the 470 active SOE agents for covert use in World War 2 and of these, so many were discarded either in the field or when the war was over. They were designed to be carried by S.O.E and OSS agents who were dropped behind enemy lines. The design is easily concealed and the triangular section blade reduces weight and adds rigidity, and it is said the resulting wound is more difficult to suture.

As with most items issued to the SOE they usually did not bear any maker's stamps in case of capture by the enemy.

This scabbard bears an ink inscription for the former owner and is dated 1947, presumably, the name inscribed was a civilian or it was marked after the war.

A private collection

These daggers are scarce because very few were issued to only some of the 470 active SOE agents for covert use in World War 2 and of these, so many were discarded either in the field or when the war over., They were designed to be carried by S.O.E and OSS agents who were dropped behind enemy lines. The design is easily concealed and the triangular section blade reduces weight and adds rigidity, and it is said the resulting wound is more difficult to suture.

As with most items issued to the SOE they usually did not bear any maker's stamps in case of capture by the enemy.

This scabbard bears an ink inscription for the former owner and is dated 1947, presumably, the name inscribed was a civilian or it was marked after the war. **£500-800**





## Interiors, Art & Antiques, 5th Dec, 2024 09:30

- 232 Joseph Hoffman for Wiener Werkstatte, a 1920s gilt brass cigarette vase of fluted panelled form with a flaring pedestal foot, bearing the factory mark and stylised monogram for Joseph Hoffman. 9 cm diameter x 8 cm high.  
For a somewhat similar example, please see, Joseph Hoffman, Bibliography: Gabriele Fahr-Becker, Wiener Werkstätte / Vienna Workshop. 1903-1932, Cologne 1994, page 172 **£200-300**



- 234 In the manner of Samuel Percy a painted wax portrait figure of King Charles I in armour in the manor of Sir Anthony Vandyke, 18th/19th century in a deep moulded ebonized frame, 37 cm x 33 cm overall, together with a good number of other 18th and 19th-century wax portraits and wax religious scenes. **£2,000-3,000**



- 235 A pair of scarce French 18th-century panels 'Chinoiserie' block printed wallpaper panels in the manner of Jean Pillement with hand-tinted detail, 149 cm x 51 cm the actual wallpaper, 179 cm x 80 cm overall dimension.  
See Country Life Feb 22, 1996, page 89 (magazine will accompany this lot ) **£800-1,200**



- 236 David Morrison (active 1793-1850), a wax portrait of an unknown lady, in a bird's eye maple frame, 25 cm x 23 cm, together with a collection of other wax figures and 18th and 19th-century wax portraits in the style of Samuel Percy and wax models under glass domes.  
A private estate  
David Morrison was active between 1793 and 1850 and was a 'Miniature Modeller' and "Wax Portraitist" to the Duke and Duchess of Gloucester, the Duchess of Cambridge and Princess Augusta in 1826. **£1,000-1,500**



- 237 Dom Perignon, vintage Jeff Koons 2004 Champagne Brut, 'Balloon Venus' limited edition, boxed. **£200-300**



## Interiors, Art & Antiques, 5th Dec, 2024 09:30

- 238 Six bottles of Pol Roger White Foil Brut Champagne, 75cl, in original cartons and outer box. **£200-300**



- 239 Two bottles of 1979 Pol Roger Extra Dry Champagne, 75 cl. (Qty: 2) **£300-400**



- 240 Eight bottles of assorted Champagne, comprising: 5 x Pol Roger Brut White Foil (four boxed), Moët & Chandon Gold Star (boxed), Canard-Duchene Royal Brut (boxed) and Bredon Brut. (Qty: 8) **£150-200**



- 241 A bottle of 1979 Pol Roger Extra Dry Champagne, 75 cl. **£150-200**



- 242 A bottle of Perrier Jouet 1985 Belle Epoque Champagne, 750ml, 12.5% Vol. **£100-150**



## Interiors, Art & Antiques, 5th Dec, 2024 09:30

- 243 Four bottles of Bollinger Special Cuvee Champagne (one boxed), together with two bottles of Bollinger Extra Special Cuvee Brut.  
(Qty: 6) **£150-200**



- 244 Six assorted bottles of Champagne, comprising: 1983 Bollinger Grane Annee, (boxed), Charles de Cazanove, (boxed), 1979 Pommery (boxed), Piper-Heidsieck Brut, (in cooler sleeve), Taittenger Brut Reserve and Billecart Salmon Brut Rose. **£150-200**



- 245 Six mixed bottles of Champagne, comprising: Prince William Royal Wedding, Dorgeval 1990, Billecart Salmon Brut Rose, Piper Heidsieck Cuvee Brut, Mercier Brut and 1989 Henri Harlin, each 75cl.  
(Qty: 6) **£150-250**



- 246 Six bottles of assorted Champagne, comprising: Louis Roederer, 2 x Moet & Chandon (boxed), 2 x Mercier Brut and Louis Raymond Brut, each 75cl.  
(Qty: 6) **£100-150**



- 247 Twelve bottles of 2017 Saint-Maurice Cotes du Rhone Villages de Rouville, Domaine L'Echevin, in original sealed carton. **£100-150**



## Interiors, Art & Antiques, 5th Dec, 2024 09:30

- 248 Twelve bottles of 1998 Chateau Gillet Bordeaux, Medaille D'Or Recolte 1988, individually numbered. **£400-600**



- 249 Twelve bottles of 2018 Laudun Cotes du Rhone Villages, Chateau Courac, in original sealed carton. **£100-150**



- 250 Six bottles of 2019 Clos Floridene Blanc, Graves, in OWC. **£100-150**



- 251 Six bottles of 1994 Chateau Caronnes St Gemme Haut Medoc, together with four bottles of 1996 Chateau Hanteillan Haut Medoc, a 1990 Chateau Hanteillan Haut Medoc and a bottle of Monte Nobile 2006, each 750ml. (Qty: 12) **£200-300**



- 252 Seventeen bottles of assorted wine, comprising: 3 x Torrealdea Reserve 2005 Rioja, Riddock Coonawara Cabernet Shiraz, 1995 Chateau Lezin Bordeaux, 2 x 2006 Roc de Lussac St Emilion, 2010 Chile Claro Cabernet Sauvignon, 2005 Chateau La Croix-Jura Bordeaux, 2009 Chateau David Bordeaux Superior, 2007 Seigneur D'Albret Medoc, Vin Santo Vino Liquoroso, Lindemans 1994 Pyrus Coonawara, 1995 Nipozzano Riserva, Muscat De Mireval, 1989 Mouton Cadet and 2009 La Tour de Marrenon. (Qty: 17) **£200-300**



Buyers Premium 25% + VAT. Fully illustrated catalogue at [dawsonsauctions.co.uk](http://dawsonsauctions.co.uk).

## Interiors, Art & Antiques, 5th Dec, 2024 09:30

- 253 Twelve bottles of assorted wine, comprising: 2 x Mouton Cadet Bordeaux 1988, 2 x Collection Privee D. Cordier Bordeaux 1995, 1981 Barolo, Schloss Vollrads Riesling 1985, 2 x Fourchaume Chablis Premier Cru 1991, 2 x Berberana Carta de Oro Rioja and 2 x Louis Latour Pinot Noir 1997. **£150-200**



- 254 Four bottles of 1995 Chateau La Cardonne Medoc, together with a 2011 Chateau Mac Carthy Saint-Estephe and a 1993 Chateau Lerville Maisonneuve Montagne Saint Emilion. (Qty: 6) **£100-150**



- 255 Twelve bottles of 2018 Laudun Cotes du Rhone Villages, Chateau Courac, in original sealed carton. **£100-150**



- 256 A collection of mixed port and spirits, comprising: Knockando 1985 Single Malt Scotch Whisky, 2 x Chateau de Maniban VSOP Armagnac (boxed), 2 x 1982 De La Force Vintage Port, a litre bottle of Mandarin Napoleon Grande Liqueur Imperiale, a Chivas Regal Whisky aged 12 Years (litre), and a magnum bottle of Cassis du Maitre de Chai de Mouton (no label to the bottle), with outer box. (Qty: 8) **£200-300**



- 257 Remy Martin, Louis XIII Grande Champagne Cognac, 40% vol, 70cl, contained in a Baccarat crystal decanter, 'Carafe Number' 2977, with conforming stopper, (no box), together with a further empty similar decanter and stopper, unmarked. **£700-900**



Interiors, Art & Antiques, 5th Dec, 2024 09:30

258 \*Withdrawn\*



259 Six bottles of 1980 Chateau Lafite Rothschild Pauillac, 75cl, not cased.  
(Qty: 6) £1,200-1,500



260 A bottle of Offley Boa Vista LBV 1982 port, bottled in 1988, 20% vol, 75cl, in original wooden box, together with an unboxed 1982 Delaforce Vintage Port, two bottles of 1992 Alain Pabiot Pouilly Fume, a bottle of 1996 Chateau Pigean Lacombe Bordeaux and a 2009 Marques de Villanueva Tempranillo.  
(Qty: 6) £150-250



261 Six bottles of Champagne, comprising 2x Pol Roger, boxed, a Pommery serie Limitee Prisunic, a boxed Pommery Brut Millesime, an unboxed Layton Brut Champagne and a 1986 Moet & Chandon (also unboxed).  
(Qty: 6) £150-250



262 Five bottles of Pol Roger White Foil Brut Champagne, 75cl, in original cartons.  
(Qty: 5) £150-250



## Interiors, Art & Antiques, 5th Dec, 2024 09:30

- 263 Three bottles of Pommery Brut Royal Champagne, contained in two out cartons, together with a bottle of Charles Kindler Champagne, and a cased bottle of Pommery Brut Rose Champagne.  
(Qty: 5) £120-180

